



Brolen Homes

HOUSE & LAND PACKAGE

Lot 2241 Grebe Circuit, Oran Park



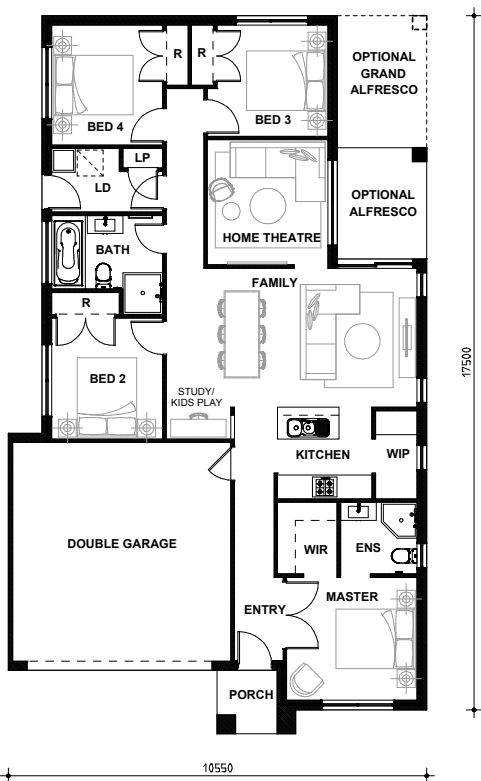
Illustrative Purposes Only

LAND SIZE | 375m²

4 BEDS 2 LIVING AREAS 2 BATHS 2 GARAGES

UPSTYLE
PROMOTION

VALUED UP TO \$45K*



\$994,020

LAND PRICE \$619,500
HOUSE PRICE \$374,520

PACKAGE INCLUSIONS

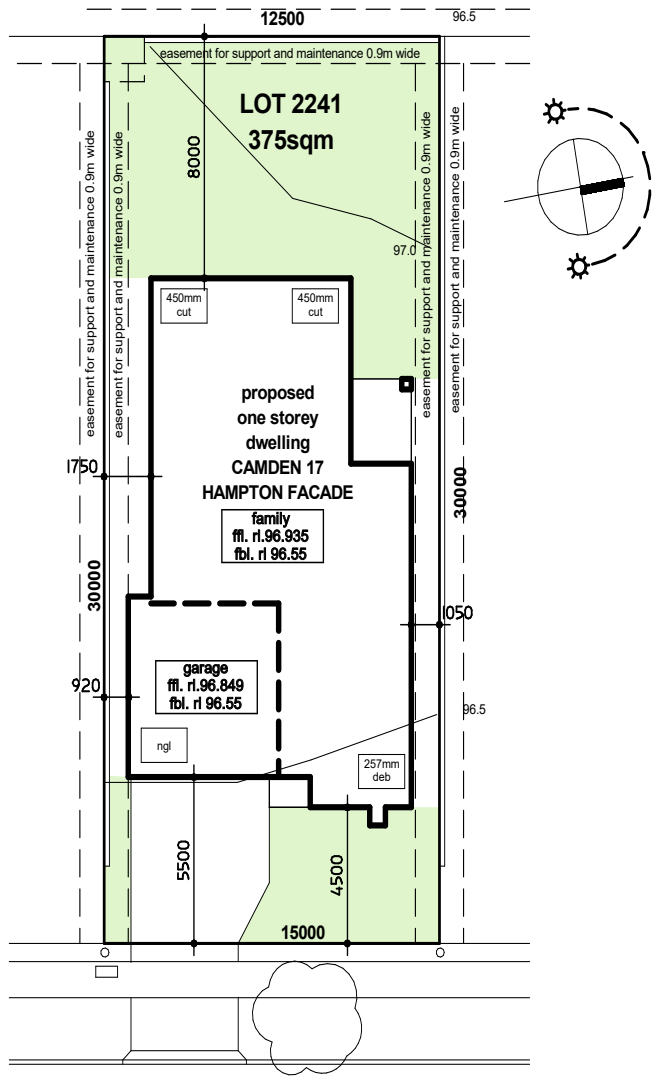
- ✓ Hamptons facade
- ✓ Upstyle Promotion included FREE
- ✓ Ducted Actron air conditioning
- ✓ 20mm Engineered stone to kitchen and vanities
- ✓ 900mm Westinghouse cooktop and oven
- ✓ 2590mm ceiling height ground floor
- ✓ Optional alfresco included
- ✓ Chainless vertical blinds and flyscreens to opening windows (exc. wet areas)
- ✓ Tiles to living areas
- ✓ Carpets to bedrooms
- ✓ Insulation to walls & sarking to underside of roof
- ✓ 'Coloured On' concrete driveway
- ✓ 7 Star Basix Rating
- ✓ Expected land registration November 2024

NB: Excludes fencing and landscaping. T&CA Upstyle Promotion

Camden 17 Home Design



floor areas	(sqm)
ground	122.7
garage	32.4
porch	2.7
optional alfresco	6.3
(optional grand alfresco)	7.5
total	164.1 (171.6 including optional grand alfresco)
ground floor	(mm)
garage	5500x5510
master	3300x3100
bed 2	2800x3050
bed 3	2800x2800
bed 4	2800x3000
kitchen	2400x2300
family	6300x3500
home theatre	3040x3150
kids play/study	1630x800
optional alfresco	2250x2800
optional grand alfresco	2250x3330



GREBE CIRCUIT
PRELIMINARY SITTING
SUBJECT TO FINAL SURVEY

Display Homes
 122 Olive Hill Drive, Cobbitty
 19 Webber Loop, Oran Park
 6 Anson Street, Schofields
 Open hours visit website



Stephen 0477 002 154
 Robert 0477 008 070
 sales@brolenhomes.com.au
 www.brolenhomes.com.au

DISCLAIMER: All images and drawings including landscape plans are for illustrative purposes only, & should be used as a guide only. Purchasers are advised to refer to the Land Contract and or Builders Tender and Contract for precise dimensions, specifications and inclusions. Brolen Homes reserves the right to revise plans, specifications, materials and suppliers without notice. B.L. 268214C.01.08.2024