



Brolen Homes

HOUSE & LAND PACKAGE

Lot 25 Saile Way, Leppington



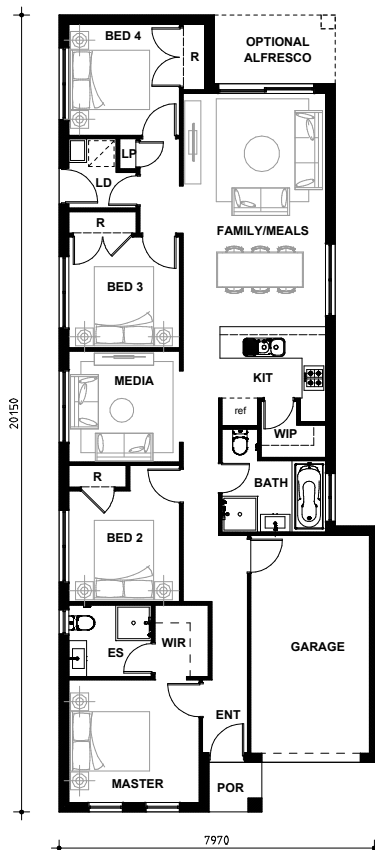
Illustrative Purposes Only

LAND SIZE | 300m²

4 2 2 1

**UPSTYLE
PROMOTION**

VALUED UP TO \$45K*



\$1,113,510

LAND PRICE \$775,000

HOUSE PRICE \$360,510

PACKAGE INCLUSIONS

- Metro facade
- Upstyle Promotion included for Free
- Ducted Actron air conditioning
- 20mm Caesarstone kitchen benchtops & vanities
- 2590mm ceiling height to ground floor
- 900mm Westinghouse cooktop & oven
- 15 x LED downlights
- Tiles to living areas
- Carpets to bedrooms
- Tiled optional alfresco included
- 'Coloured On' concrete driveway
- Fixed site costs
- 7 Star Basix rating included
- Expected land rego Oct/Nov 2025
- NB: T&Cs apply. Excludes fencing and landscaping

Build with Trusted Confidence



Display Homes
24 Saintly Street, Menangle Park
Homeworld Oran Park



Brolen Homes



Stephen 0477 002 154
Robert 0477 008 070



sales@brolenhomes.com.au



www.brolenhomes.com.au

Open hours visit website

DISCLAIMER: All images and drawings including landscape plans are for illustrative purposes only, & should be used as a guide only. Purchasers are advised to refer to the Land Contract & or Builders Tender and Contract for precise dimensions, specifications and inclusions. Brolen Homes reserves the right to revise plans, specifications, materials and suppliers without notice. B.L. 26924C. 26.09.2025