



Brolen Homes

HOUSE & LAND PACKAGE

Lot 2545 Flamingo Circuit, Oran Park



Illustrative Purposes Only

LAND SIZE | 375m²

5 2 3 2

UPSTYLE PROMOTION
VALUED UP TO \$45K*

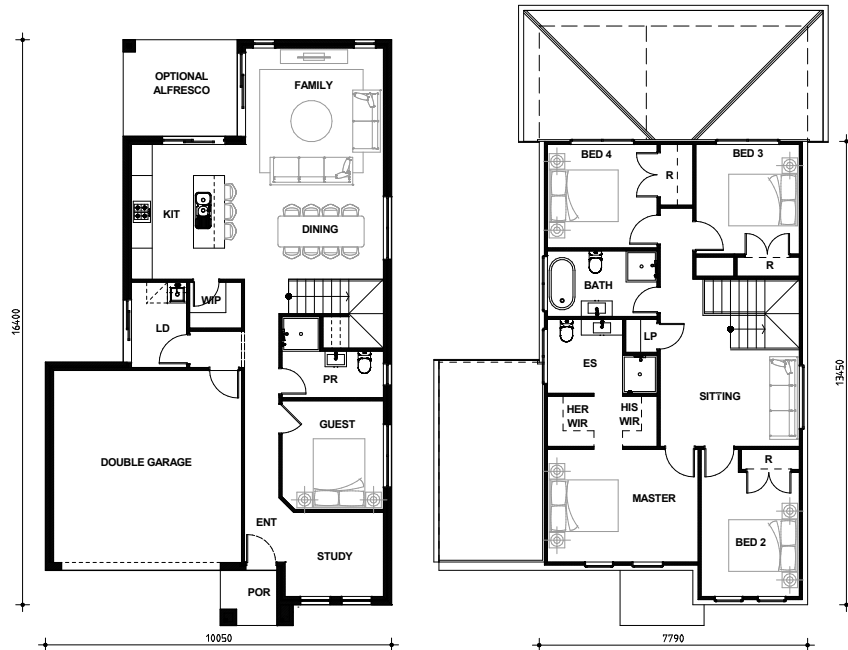
\$1,322,130

LAND PRICE \$799,500

HOUSE PRICE \$522,630

PACKAGE INCLUSIONS

- Classic facade
- Upstyle Promotion included for free
- Ducted Actron air conditioning
- Designer Caesarstone to kitchen and bathrooms
- 900mm Westinghouse cooktop and oven
- Designer tapware to kitchen and bathrooms
- Soft close kitchen cupboards
- 2590mm ceiling height to ground floor
- Flyscreens to windows
- Tiles to porch, entry, study, kitchen, dining, family and optional alfresco
- Carpets to bedrooms, sitting and guest
- 'Coloured On' concrete driveway
- Fixed site costs
- 7 Star Basix rating included
- Expected land rego November 2026
- NB: Excludes light fittings, window coverings, fencing and landscaping. *T&Cs Apply

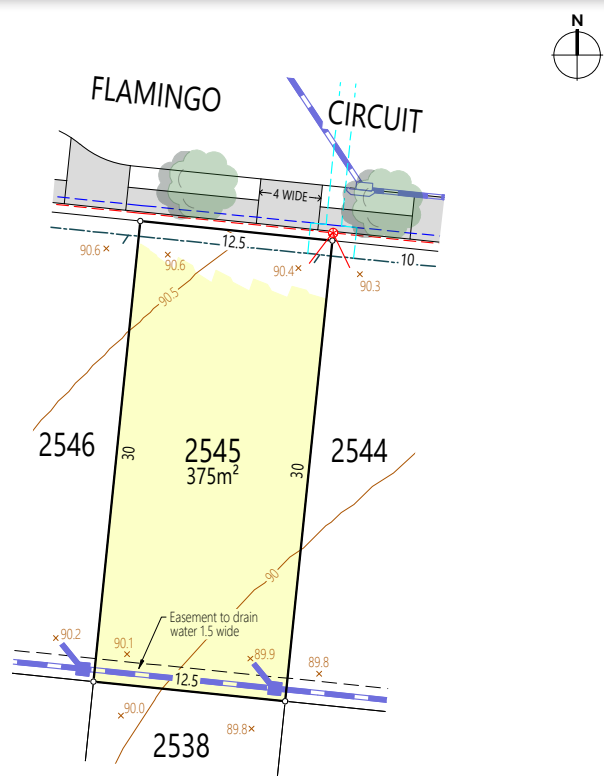


Grange 26 Home Design

Build with Trusted Confidence



floor areas	(sqm)
ground	94.1
garage	33.4
porch	2.9
first	99.4
optional alfresco	9.3
total	239.1
room sizes	(mm)
garage	5450x5500
master	4370x3270
bed 2	2850x3600
bed 3	3000x3180
bed 4	3180x3000
sitting	4040x2850
kitchen	2700x3900
family	4000x3700
dining	4000x3000
study	2850x2440
guest	2940x3150
optional alfresco	3310x2800



Legend

Drainage		Footpath		Building And Design Information
Electrical		Filled area		Fill <input checked="" type="checkbox"/> Contour <input checked="" type="checkbox"/>
Communications *		Denied access		Lot Classification *
Easement		Retaining wall		Acoustic *
Water main		Contour		Salinity *
Sewer line		Surface level		Aggressivity *
				BAL Rating *

* Information not available at time of publication



Scan to explore Upstyle Promo Inclusions

Display Homes
24 Saintly Street
Menangle Park

35 Allambie Circuit
Homeworld Oran Park



(02) 8776 8000

sales@brolenhomes.com.au

www.brolenhomes.com.au

DISCLAIMER: All images and drawings including landscape plans are for illustrative purposes only, & should be used as a guide only. Purchasers are advised to refer to the Land Contract and or Builders Tender and Contract for precise dimensions, specifications and inclusions. Brolen Homes reserves the right to revise plans, specifications, materials and suppliers without notice. B.L. 268214C 12.05.2026