



Brolen Homes

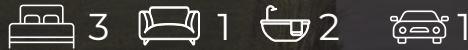
# HOUSE & LAND PACKAGE

Lot 6 Levy Way, Leppington

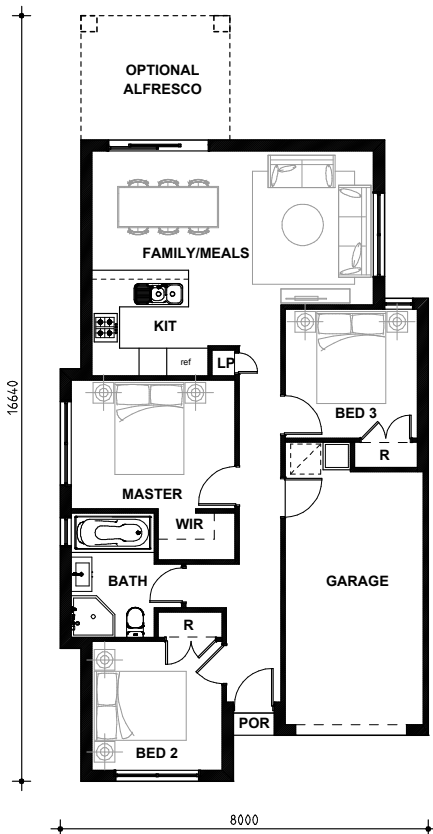


Illustrative Purposes Only

LAND SIZE | 253m<sup>2</sup>



**UPSTYLE**  
PROMOTION  
VALUED UP TO \$45K\*



**\$998,090**

LAND PRICE \$695,000  
HOUSE PRICE \$303,090

### REGISTERED LAND

- Metro facade
- Upstyle Promotion included for Free
- Ducted Actron air conditioning
- 20mm Caesarstone kitchen benchtops & vanities
- 2590mm ceiling height to ground floor
- 900mm Westinghouse cooktop & oven
- 10 x LED downlights
- Tiles to living areas
- Carpets to bedrooms
- Tiled optional alfresco included
- Taubmans 3 coat paint system
- 'Coloured On' concrete driveway
- Fixed site costs
- 7 Star Basix rating included
- NB: T&Cs apply.
- Excludes fencing and landscaping

# Yorkshire 11 Home Design

Build with Trusted Confidence



## Yorkshire 11 Measurements

floor areas	(sqm)
ground	81.3
garage	18.7
porch	0.4
optional alfresco	8.8
<b>total</b>	<b>109.2</b>

room sizes	(mm)
garage	3000x5500
master	3560x2800
bed 2	2830x2800
bed 3	2870x2800
kitchen	2520x2300
family/meals	6120x3350
optional alfresco	3240x2700



Scan to explore Upstyle Promo Inclusions

**Display Homes**  
24 Saintly Street  
Menangle Park

**35 Allambie Circuit**  
Homeworld Oran Park



# Brolen Homes

(02) 8776 8000

sales@brolenhomes.com.au

www.brolenhomes.com.au

DISCLAIMER: All images and drawings including landscape plans are for illustrative purposes only, & should be used as a guide only. Purchasers are advised to refer to the Land Contract and or Builders Tender and Contract for precise dimensions, specifications and inclusions. Brolen Homes reserves the right to revise plans, specifications, materials and suppliers without notice. B.L 268214C 12.06.2026