

SOHO

Residences



Disclaimer: This artist's impression is for illustrative purposes only and may not accurately represent the specific lot. Please contact the sales team for detailed, lot-specific built form information.

97 South Circuit
LOT 9976



3 + MP/4



3



2



195m²

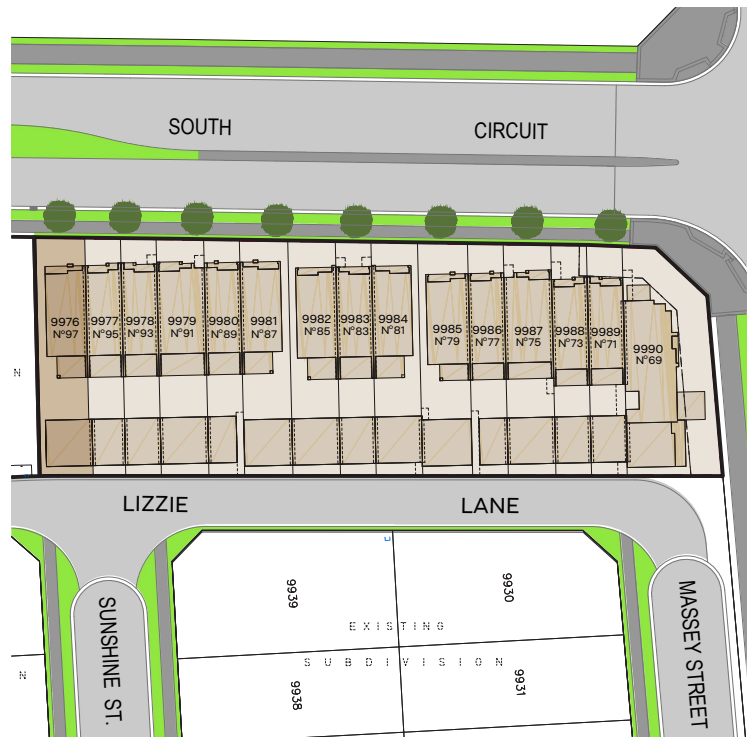


163m²

INCLUSIONS

Internal Colour Scheme: Scheme A

- Turnkey home with fencing and landscaping included
- 2590mm high ceilings to ground floor and first floor
- Ducted air conditioning throughout
- Luxury 600x600mm ceramic floor tiles to the ground floor and carpet to the first floor
- 1200mm high tiling to the full perimeter of the wet areas and 2100mm high within the shower cubicles
- Designer 600mm SMEG appliances including an integrated dishwasher and microwave
- LED downlights to living areas with pendants to kitchen
- Sophisticated tapware and bathroom accessories
- Elegant 40mm Caesarstone kitchen benchtops and waterfall ends to the island
- Architecturally designed internal and external Gainsborough door furniture
- Italian Austral San Selmo feature bricks on the facade



South Circuit - Oran Park

LOT 9976

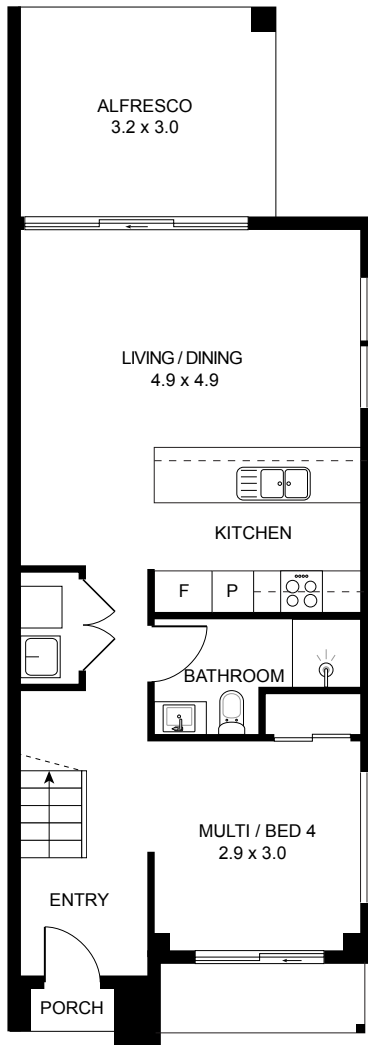
Internal: 110m²

External: 17m²

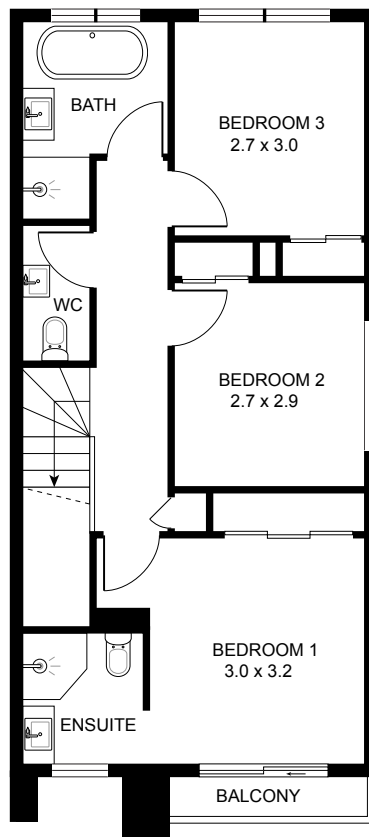
Garage: 36m²

Total Building Area: 163m²

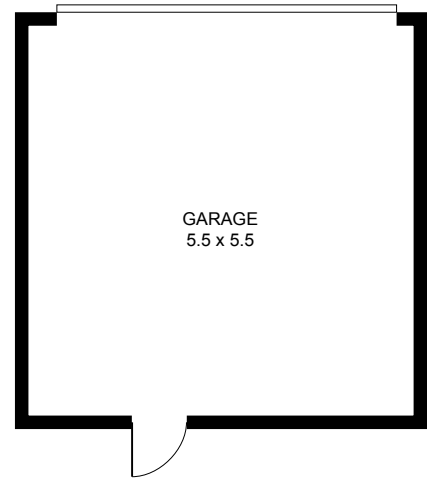
Lot Size: 195m²



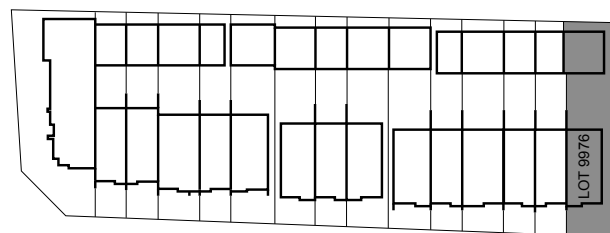
GROUND FLOOR



FIRST FLOOR



SCALE 1:100 METRE



ORAN PARK

02 9043 7500

oranpark.com.au