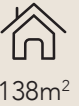
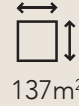


# SOHO

Residences



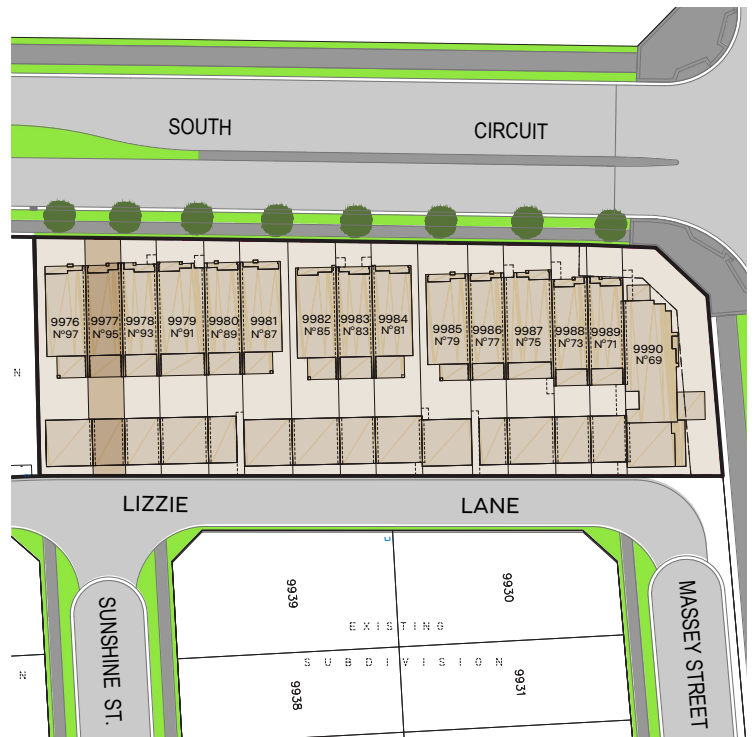
95 South Circuit  
LOT 9977



## INCLUSIONS

Internal Colour Scheme: Scheme B

- Turnkey home with fencing and landscaping included
- 2590mm high ceilings to ground floor and first floor
- Ducted air conditioning throughout
- Luxury 600x600mm ceramic floor tiles to the ground floor and carpet to the first floor
- 1200mm high tiling to the full perimeter of the wet areas and 2100mm high within the shower cubicles
- Designer 600mm SMEG appliances including an integrated dishwasher and microwave
- LED downlights to living areas with pendants to kitchen
- Sophisticated tapware and bathroom accessories
- Elegant 40mm Caesarstone kitchen benchtops and waterfall ends to the island
- Architecturally designed internal and external Gainsborough door furniture
- Italian Austral San Selmo feature bricks on the facade



# South Circuit - Oran Park

LOT 9977

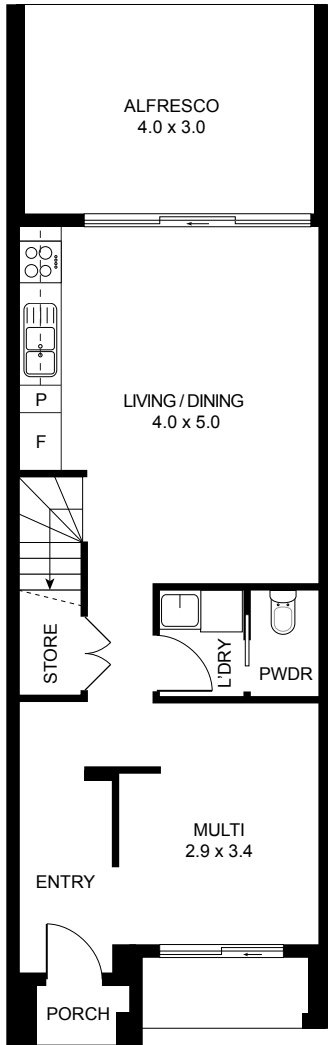
Internal: 97m<sup>2</sup>

External: 16m<sup>2</sup>

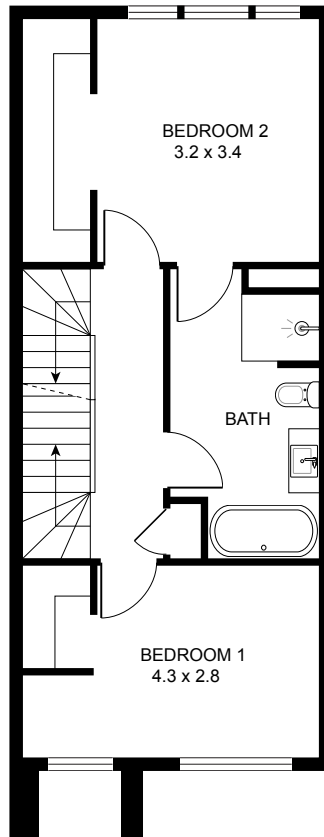
Garage: 25m<sup>2</sup>

**Total Building Area: 138m<sup>2</sup>**

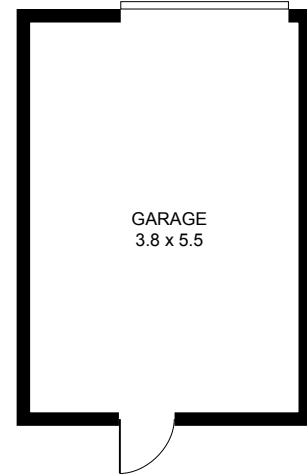
Lot Size: 137m<sup>2</sup>



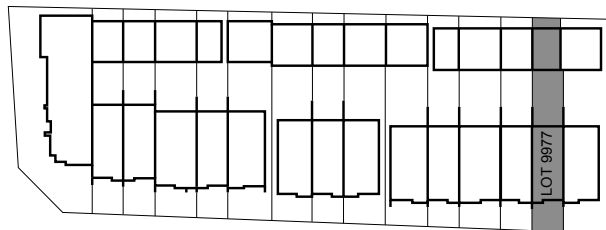
GROUND FLOOR



FIRST FLOOR



SCALE 1:100 METRE



**ORAN PARK**

02 9043 7500

oranpark.com.au