



**Brolen Homes**

# CIVIC GREEN

*Custom Designed Courtyard Homes*

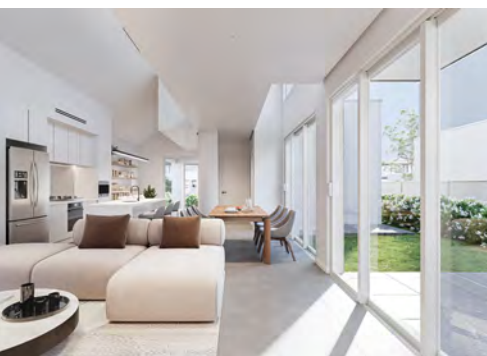


Illustrative Purposes Only

Lot 9954 Civic Way  
Oran Park

**\$1,565,900**

A new chapter  
in elevated living



 4  4  3  2

*An exclusive collection of turn-key architecturally designed courtyard homes by Brolen Homes, nestled in Oran Park Town.*

Tucked within the vibrant heart of Oran Park Town, Civic Green isn't just a place to live - it's a place to arrive. A statement of design intent and lifestyle, these bespoke residences by Brolen Homes reimagine the possibilities of urban living, where architecture, craftsmanship, and comfort meet with quiet confidence.

From the moment the motorised gates glide open, there's an undeniable sense of occasion. Double street frontage gives each home a bold, sculptural presence - while inside, the journey unfolds in layers of considered design.

Sunlight pours into expansive living zones beneath soaring ceilings. An architectural void above the kitchen and dining creates a striking sense of scale and airiness - designed not just to impress, but to elevate everyday rituals.

A private downstairs guest suite with ensuite offers a warm welcome for visitors, while upstairs, a luxurious main suite becomes your own personal escape, complete with a generous walk-in robe and a beautifully appointed ensuite. Across both levels, multipurpose zones, a separate media room, and a light-filled sitting area deliver flexibility for modern family life.



# Custom "architect" Designed Home

Build with Trusted Confidence



## Every Detail is Purposeful

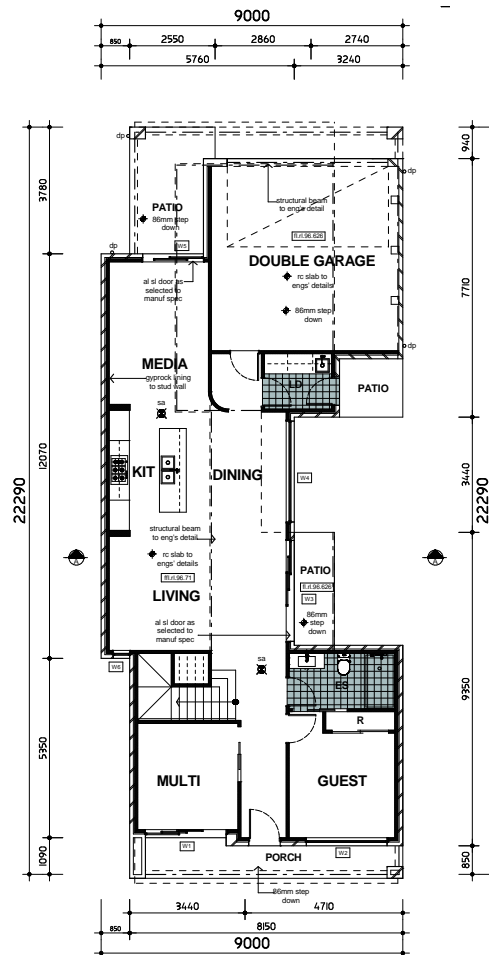
Premium tiles ground the living spaces in quiet sophistication, frameless glass balustrades accentuate the open flow of the home, and the textures underfoot shift seamlessly from plush carpet to sleek tiling. The kitchen is appointed with Smeg appliances and stunning 40mm Caesarstone benches and island bench with waterfall edges - crafted not just for cooking, but for gathering.

More than just beautiful, these homes are future-ready: solar panels, double glazing, zoned air-conditioning, and full landscaping ensure comfort, sustainability, and effortless luxury from day one.

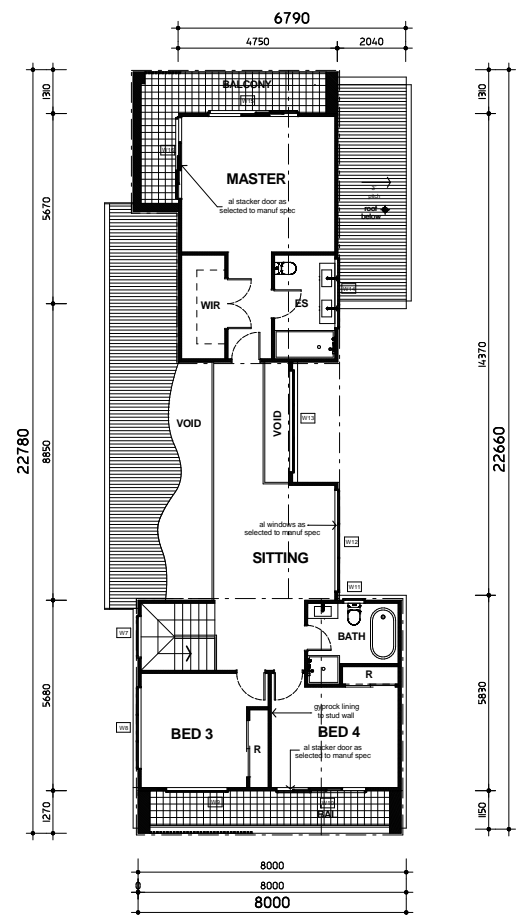
This is Civic Green. A home that tells your story - with architectural grace, intelligent design, and a bold sense of place.

- 5% DEPOSIT balance on completion estimated early 2026.
- A limited collection.
- Full Turn-Key.
- Designed to inspire. Built to last.

Now available. Enquire now to secure your designer home.



|               |                      |
|---------------|----------------------|
| Ground Floor  | 110.7 m <sup>2</sup> |
| Garage        | 33.9 m <sup>2</sup>  |
| Porch         | 10.0 m <sup>2</sup>  |
| Laundry Patio | 3.3 m <sup>2</sup>   |
| Rear Patio    | 8.9 m <sup>2</sup>   |



|               |                      |
|---------------|----------------------|
| Alfresco      | 4.0 m <sup>2</sup>   |
| First Floor   | 104.9 m <sup>2</sup> |
| Front Balcony | 10.0 m <sup>2</sup>  |
| Rear Balcony  | 14.4 m <sup>2</sup>  |
| Total Floor   | 298.1 m <sup>2</sup> |

**Display Homes**  
122 Olive Hill Drive, Cobbitty  
19 Webber Loop, Oran Park  
6 Anson Street, Schofields  
Open hours visit website



Stephen 0477 002 154  
Robert 0477 008 070  
sales@brolenhomes.com.au  
www.brolenhomes.com.au

DISCLAIMER: All images and drawings including landscape plans are for illustrative purposes only, & should be used as a guide only. Purchasers are advised to refer to the Land Contract and or Builders Tender and Contract for precise dimensions, specifications and inclusions. Brolen Homes reserves the right to revise plans, specifications, materials and suppliers without notice. B.L. 268214C. 23.04.2025