



GREENWICH 23
Chelsea Facade

PACKAGE PRICE:
\$1,368,700

House Price: \$488,800
Land Price: \$879,900



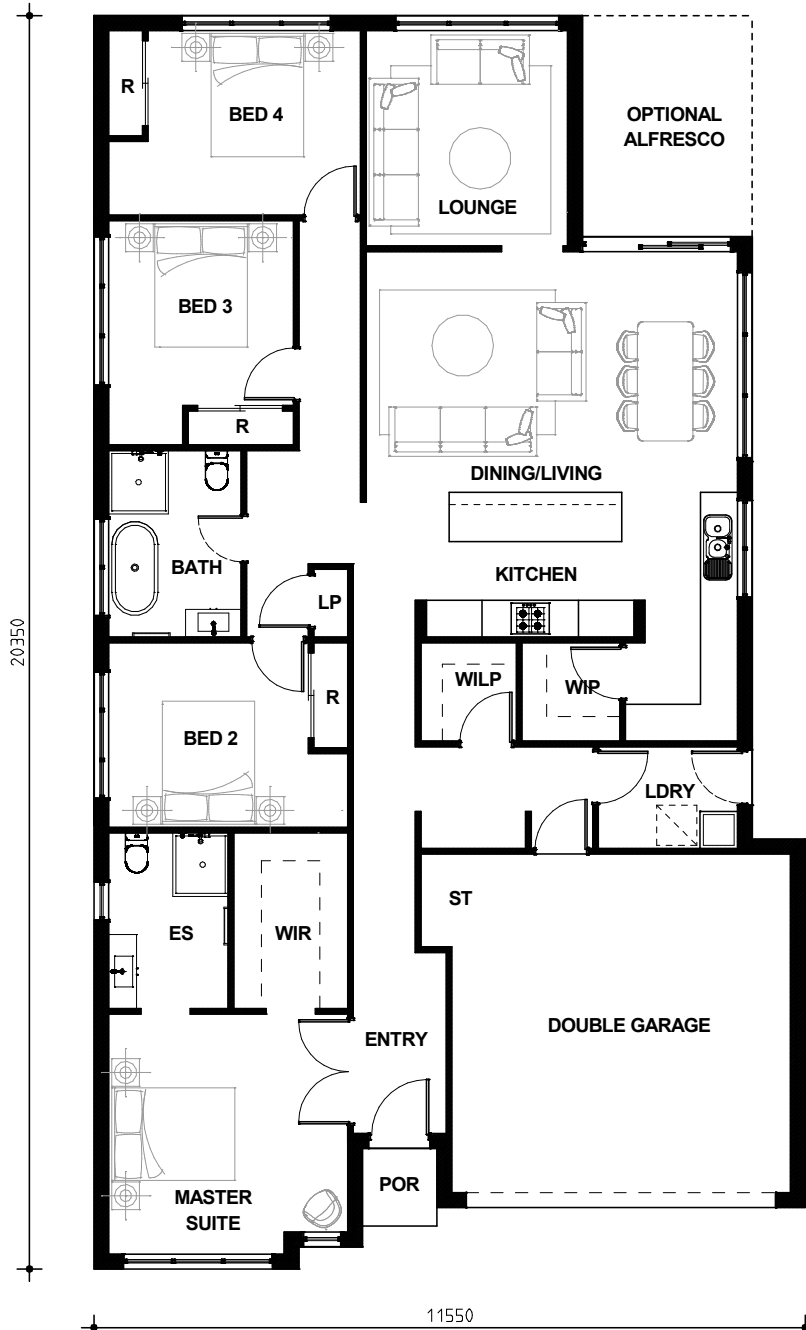
*Modern family
living in a
beautifully
crafted home.*

*Expected Rego Date: End Qtr 4 2026
Land Size: 375 m²*

INCLUSIONS

- Upstyle Promotion included for Free valued up to \$45,000*
- Ducted Actron air conditioning
- 20mm Engineered stone to kitchen benchtops
- 2590mm ceiling height to ground floor
- 900mm Westinghouse cooktop & oven
- Dishwasher
- Microwave with trim kit
- Tiles to porch, entry, kitchen, living, dining, hallway and alfresco
- Carpets to lounge and bedrooms
- Alfresco included
- 20 x downlights included
- LED door bell
- Freestanding bath
- Premium 3 coat paint system
- 'Coloured On' concrete driveway
- Fixed Price 18 Month Tender
- 7 Star Basix rating included
- Fixed site costs
- NB: *Terms & Conditions apply
- Excludes fencing & landscaping

LOT 1135, EVERDENE



garage	5500
porch	2.8
optional alfresco	9.9
total	218.7

room sizes	(mm)
garage	5500x5500
master	3880x3900
bed 2	3240x3000
bed 3	3000x3000
bed 4	3450x3000
kitchen	5050x2300
living/dining	6000x3900
lounge	3270x3500
optional alfresco	2760x3590

DISCLAIMER: All images and drawings including landscape plans are for illustrative purposes only, & should be used as a guide only. Purchasers are advised to refer to the Land Contract & or Builders Tender and Contract for precise dimensions, specifications and inclusions. Broten Homes reserves the right to revise plans, specifications, materials and suppliers without notice. B.L.268214C. 26.11.2025